

CR 30 SP+ PACKAGE

FOR QUANTUM MEDICAL IMAGING

The CR 30 SP+ Package introduces Agfa HealthCare's new CR 30-X digitizer, an exciting new table top CR designed specifically for the smaller practice. The compact and convenient CR 30-X is easy to install, use and maintain, providing seamless integration, from X-ray exposure to print or softcopy.

The CR 30 SP+ Package includes features that provide the same high image quality and advanced functionality of packages with more expensive full size models, because every patient deserves the highest image quality technology can deliver without compromise. Loaded with easy-to-use NX software features, designed to optimize workflow and make patient care your number one priority, this great package comes complete with the software and hardware you need to *Go Digital* today.

The Most Frequent Tasks Are The Easiest To Do

The radiographer can perform all their daily tasks using NX's Worklist and Examination windows. The Worklist window allows the radiographer to enter patient data or to select it from the Modality Worklist. In the Examination mode, the radiographer can capture the patient identification and QC the image all in the same window. The Fast Preview feature allows confirmation of correct positioning and exposure within seconds, even while the final image is being completed.

Excellent Image Quality

The CR 30 SP+ Package includes MUSICA²®, Agfa HealthCare's Multi-Scale Image Processing software. MUSICA² uses patented contrast equalization algorithms to automatically process the image. The result is enhanced visualization of even subtle features in both bony and soft tissue for uncompromising image quality.



For a broad range of applications...



CR 30 SP+ PACKAGE

An Agfa Solution for Quantum Medical Imaging

NX

CR 30-X is available in combination with NX, Agfa HealthCare's image identification and quality control tool, for a highly efficient and optimized radiology workflow.

Cassettes With Memory

CR 30-X uses dedicated cassettes with an embedded memory that stores the data entered during identification. The built-in antenna card identifies the data by no-touch radiofrequency tagging. ID data and images are linked from the beginning throughout the entire electronic processing system.

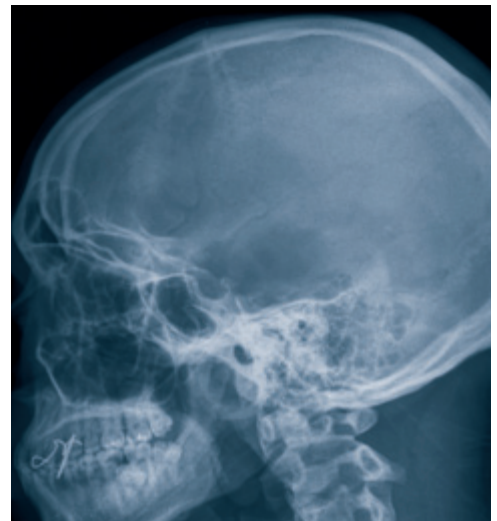
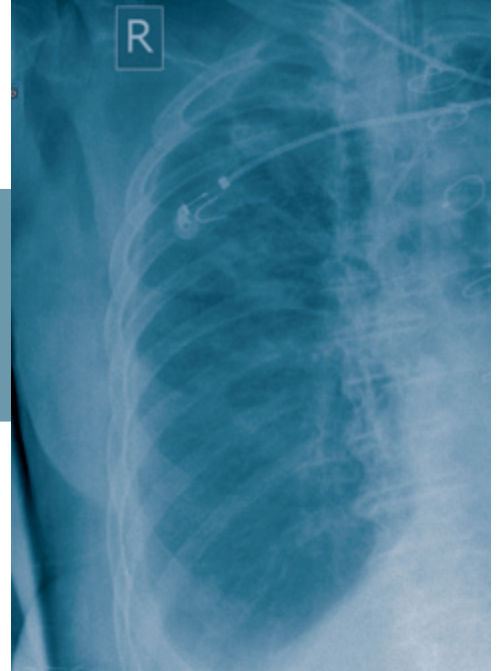


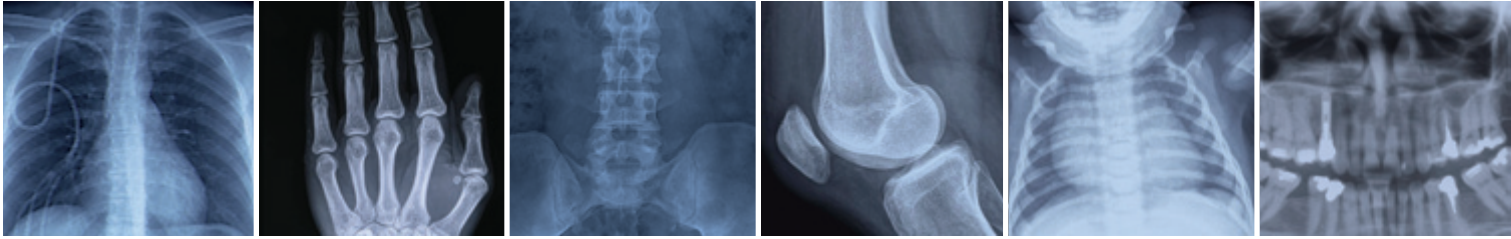
Add an Option, Brighten Your Digital Future

- NX Optview:
 - Square Marker, Grid Line Suppression and Black Border licenses
- NX Integrated Workflow:
 - Emergency, MPPS and Viewing Prior licenses
- NX Quality Assurance:
 - Dose Consistency Reporting and Repeat/Reject program licenses
- RIS LINK For Remote Data Entry:
 - Link to DICOM or non-DICOM RIS
- Mobile Kit:
 - Appropriate for mobile use (vans, military, etc)
- Stand:
 - For the CR 30-X digitizer and the NX workstation

The CR 30 SP+ Package Includes Software Loaded With Functionality:

- Window and level, flip, rotate, image reversal
- DICOM print, store, export
- CD burn with viewer
- Advanced annotation to an image, including markers, predefined text, drawing lines or geometrical shapes, applying shutters to mask areas of the image and more
- Pan and zooming for a more detailed view
- Advanced measurement of distance and angles
- Histogram display for image analysis
- Advanced access to MUSICA² image processing parameters to fine tune for specific studies





CASSETTE SIZES: CR MD4.0T GENERAL CASSETTES

ACCEPTED CASSETTE SIZES

SPATIAL RESOLUTION

PIXEL MATRIX SIZE

Resolution

35 x 43 cm (14 x 17 in)	10 pixels/mm	3480 x 4248
24 x 30 cm	10 pixels/mm	2328 x 2928
18 x 24 cm (option)	10 pixels/mm	1728 x 2328
15 x 30 cm (option)	10 pixels/mm	1440 x 2928

SPECIFICATIONS

