

6 Reasons

to add DigitalNow to your mammography practice

The advanced features of R2 DigitalNow offer major milestones in mammography workflow and image quality with flexible hardware and software solutions for practices looking to transition to the digital environment. Proprietary algorithms and the finest in scanners offer improved image quality. Expanded film handling and intuitive operating software enhance system ease of use. DigitalNow is fully DICOM and IHE Mammography Image Display Profile compliant.

ONE.

DigitalNow scans mammography films from all vendors and is capable of handling up to 24 films per study, including spot compression and magnification views, without having to manually count films.

TWO.

Orientation and identification errors are easily corrected with a touch of a button, without rescanning.

THREE.

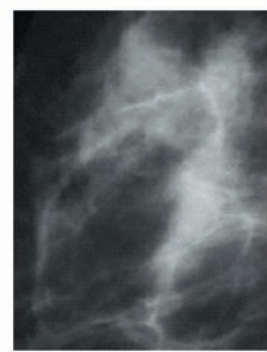
DigitalNow offers a customizable list of scanning protocols for mammography procedures, improving technologist workflow.

FOUR.

DigitalNow provides a choice of image appearance, Enhanced Local Contrast (ELC) or Natural Pixel Value. ELC improves the conspicuity and information content of subtle lesions, without manual window adjustment. Natural Pixel Value will display the image just as it was scanned permitting manual window and leveling to the desired setting.



Natural Pixel Value



Enhanced Local Contrast

FIVE.

Archive screen-film breast images at 50 or 100 micron pixel resolution to manage image storage requirements, saving valuable storage space.

Image Sizes

Without compression

	50 Micron			100 Micron		
	Per Image	Per Study 4-film	Per Study Avg, mix ¹	Per Image	Per Study 4-film	Per Study Avg, mix ¹
18×24 cm	34.6 MB	138.2 MB	152 MB	8.6 MB	34.6 MB	38 MB
24×30 cm	57.6 MB	230.4 MB		14.4 MB	57.6 MB	

Throughput

	Per Study 4-film	Per Study Avg, mix ¹
18×24 cm	23/hour	21/hour
24×30 cm	14/hour	

With 2.5:1 loss-less compression at PACS

	50 Micron			100 Micron		
	Per Image	Per Study 4-film	Per Study Avg, mix ¹	Per Image	Per Study 4-film	Per Study Avg, mix ¹
18×24 cm	13.8 MB	55.3 MB	60.8 MB	3.4 MB	13.8 MB	15.2 MB
24×30 cm	23 MB	92.2 MB		5.8 MB	23 MB	

¹4-film, 85% 18×24 cm, 15% 24×30 cm

SIX.

Electronically import patient information for complete image identification, assuring accurate study comparison.

DICOM Modality Worklist Query:

- By MRN
- By Accession Number
- By Patient Name Fragment
- HIS/RIS HL7 via Broker
- Mammography Reporting Systems (supporting MWL)

DICOM Query:

- Patient Root
- Study Root
- HIS/RIS HL7 via Broker
- Mammography Reporting Systems (supporting MWL)



SS-CAD-012 (02/07) US/International © 2007 Hologic Inc. All rights reserved. R2, R2 Technology, the R2 logo, Earlier.Smarter.Better, Hologic, MIMS-plus and the Hologic logo are trademarks or registered trademarks of Hologic Inc. in the USA and other countries. Verisign is a registered trademark of VeriSign, Inc.

Corporate Headquarters

35 Crosby Drive, Bedford, MA 01730-1401 USA
 Tel: +1.781.999.7300
 Sales: +1.781.999.7453
 Fax: +1.781.280.0668
www.hologic.com sales@hologic.com