

GE Healthcare

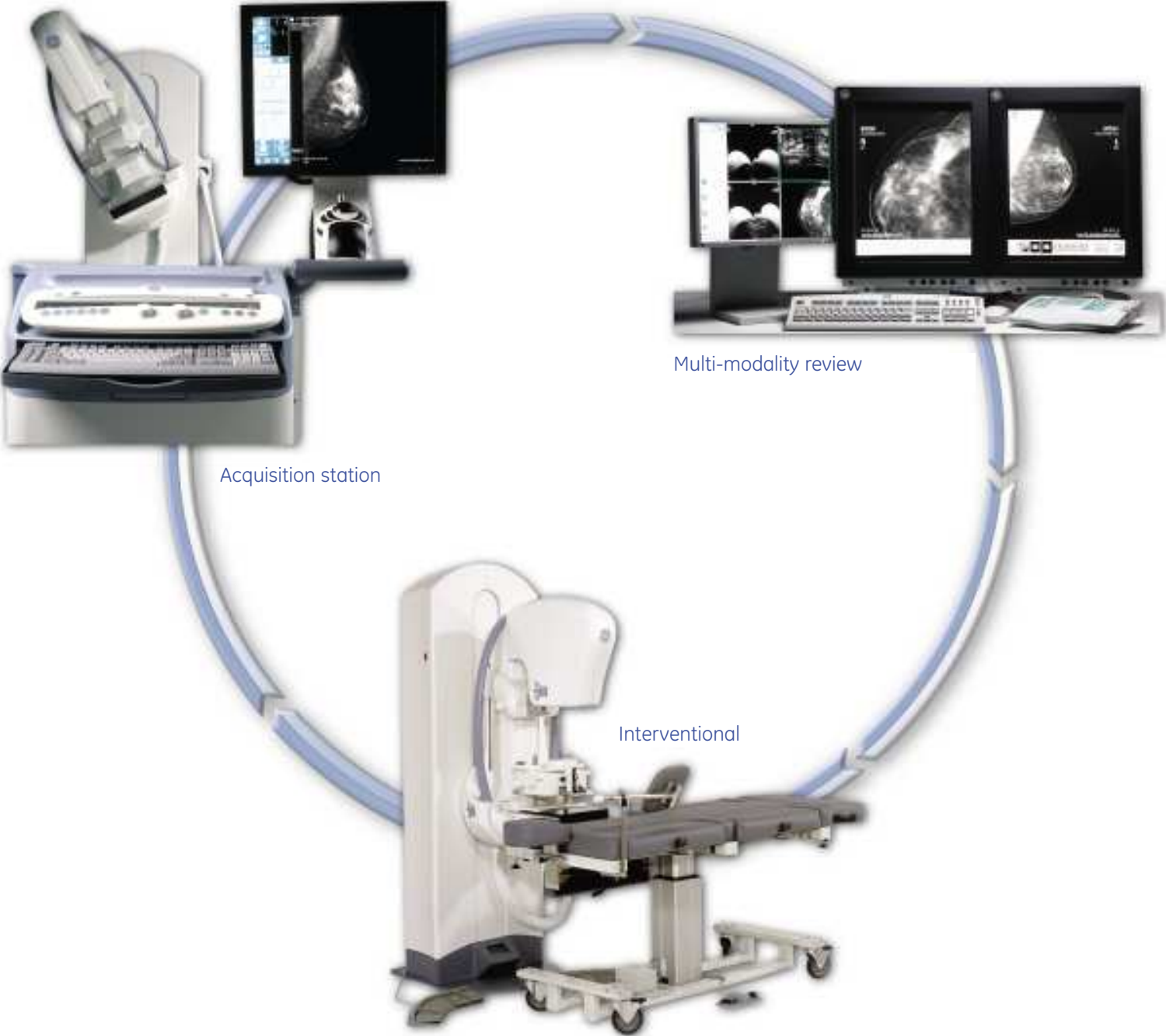
# Senographe DS

Versatile digital mammography station



# Senographe DS. Breast care born of experience. Proven in practice.

Addressing all aspects of breast care from  
screening to interventional procedures.



At GE, we don't simply meet expectations.

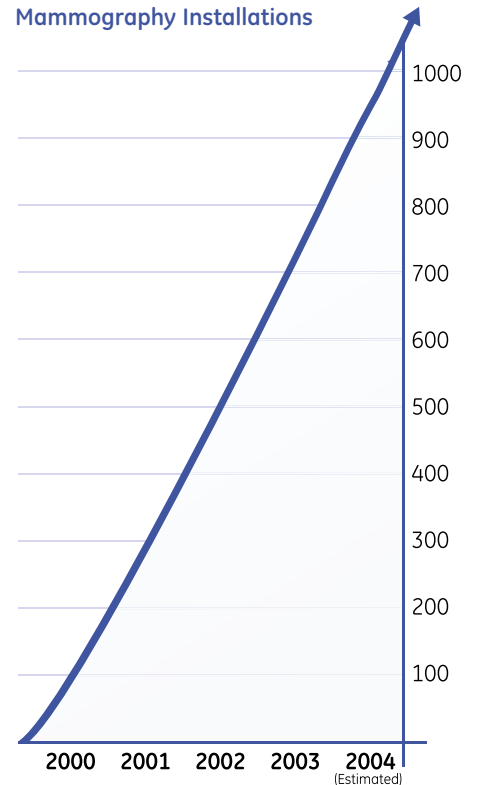
We define them.

With the introduction of full-field digital mammography (FFDM) in 2000\* GE continued its leadership in mammography.

Since then, more than 15 million women have been imaged with GE's FFDM technology. Designing the whole system around the proven Revolution™ flat panel detector, GE is the only manufacturer today that controls the entire imaging chain from the tube to the review workstation. Healthcare professionals using Senographe® digital systems on a daily basis praise its image quality, productivity and reliability.

Now GE draws on this unrivaled experience to take digital mammography to the next level with the Senographe DS system. Designed with input from healthcare professionals and patients worldwide, Senographe DS sets new benchmarks for ease-of-use, patient comfort, image quality, versatility, digital workflow integration...and investment security.

GE Full-Field Digital Mammography Installations



\* 1999 in Europe and Asia

1997

Revolution™ All-Digital Flat Panel Detector

2002

Computer-Aided Detection

2000

Senographe 2000D Full-Field Digital Mammography System

2004

Senographe DS All-Digital Mammography System from Screening to Intervention



# A comfort to technologists and patients alike.

Senographe DS is a mammography system everyone can get comfortable with.

## For technologists

It simplifies clinical exams while fitting their individual needs – allowing them to focus on the patient.

- Intuitive and convenient user interface. Each button is uniquely shaped, allowing technologists to operate the system while maintaining visual contact with the patient.
- One-touch motorized positioning for cranio-caudal views and oblique views. The first oblique angle is used to drive to the opposite oblique view. Gantry rotation stops automatically for lateral views.
- Two drive speeds for height and rotation enables fast or fine positioning. Speed profiles can be set to your preference.

The Senographe DS allows easy one-touch image acquisition with consistent image quality.

- AutoCell defines the densest area of the breast while AOP (Automatic Optimization of Parameters) selects the optimal imaging parameters (track, filter, kV, mAs) based on the breast thickness and radiological density.
- Images are displayed in less than 10 seconds for fast positioning and IQ checks.
- AutoQAP ensures consistent image quality while minimizing the workload associated with quality assurance programs.

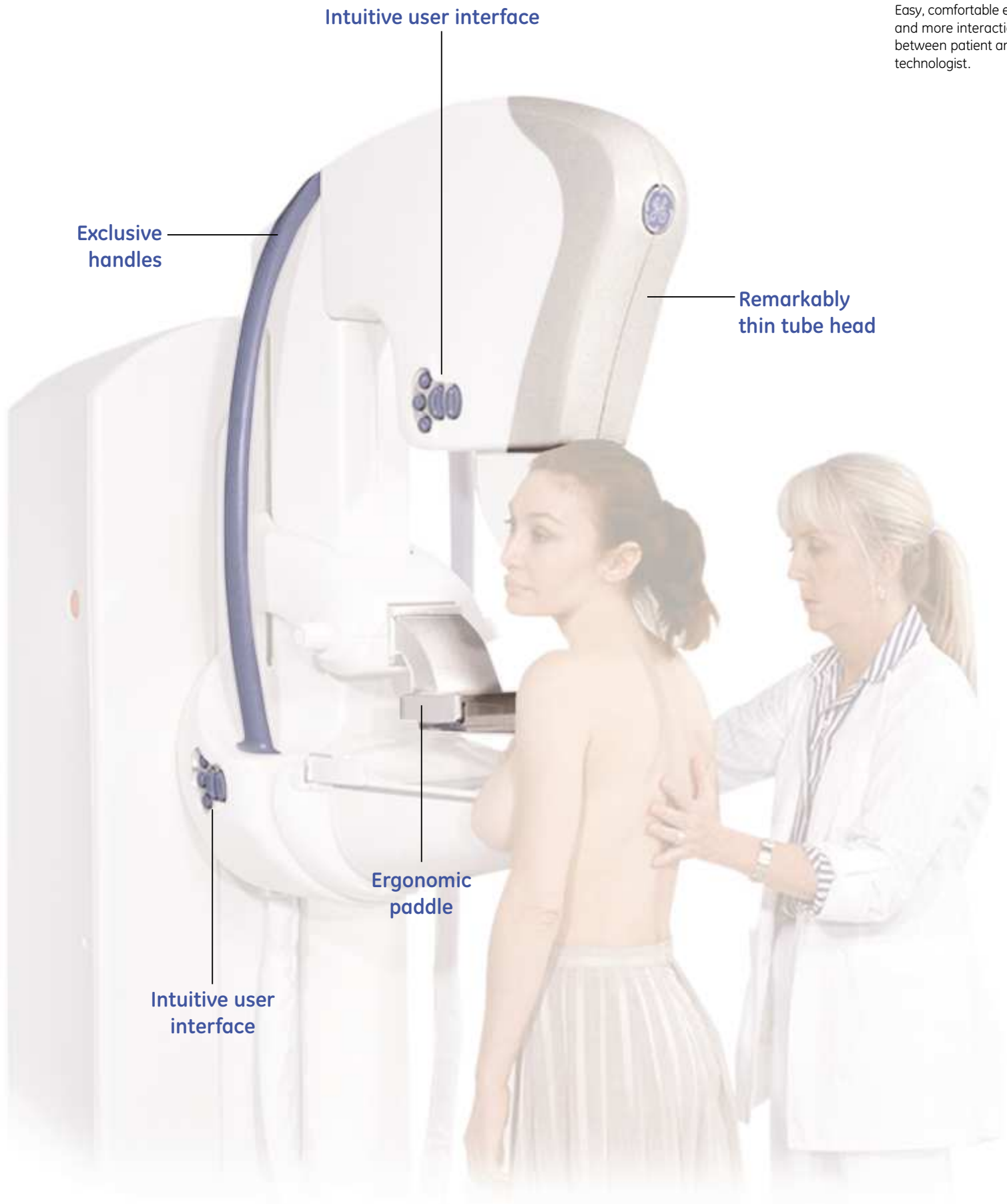
## For patients

Senographe DS provides a less stressful mammography experience for patients, too, with new features that enhance their comfort and reassurance.

- A remarkably thin tube head allows for comfortable and efficient patient positioning.
- A new ergonomic paddle shapes to the breast to improve compression uniformity and comfort.
- Exclusive handles are designed to minimize a patient's muscle contraction.
- Patients in wheelchairs can be easily positioned.



**The result:**  
Easy, comfortable exams  
and more interaction  
between patient and  
technologist.



**Intuitive user interface**

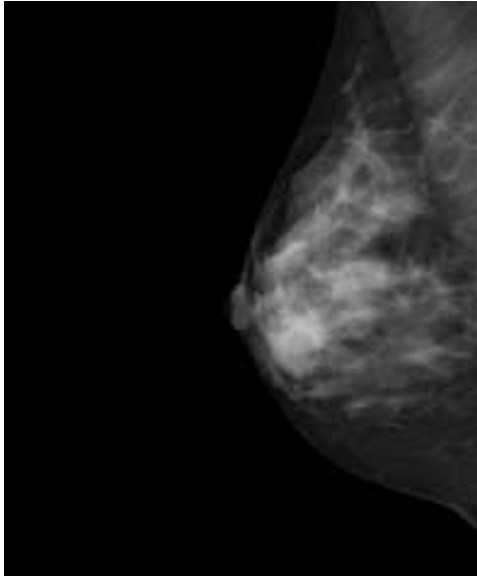
**Exclusive handles**

**Remarkably thin tube head**

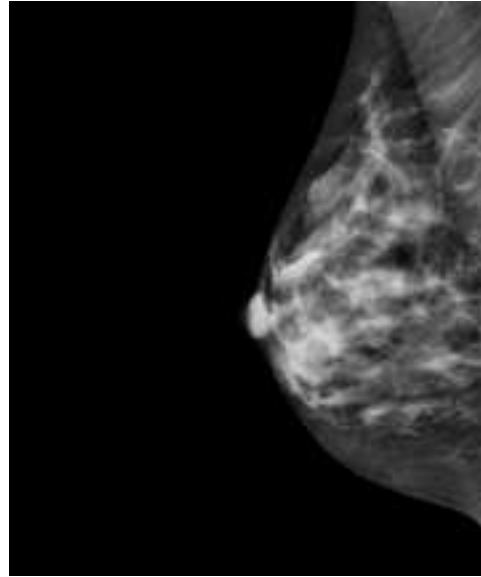
**Ergonomic paddle**

**Intuitive user interface**

# Clinical confidence. The diagnosis is in the detail.



GE Full-Field Digital Image with Tissue Equalization



GE Full-Field Digital Image with Premium View  
and Fine View

That's why Senographe DS produces sharp, high-quality images. It builds on our pioneering legacy of image quality breakthroughs, with clear proof of our commitment to the advanced digital platform of the future.

- GE's proven Revolution digital flat panel detector delivers excellent image quality with high Detective Quantum Efficiency (DQE).
- New smaller tube with improved performance and the exclusive Rhodium track allows for image quality and dose optimization.
- AutoCell and AOP choose the optimal exposure parameters for any given breast thickness and composition.
- Three automatic exposure modes (Contrast, Standard and Dose) offer greater flexibility in dose management. Dose mode provides image quality comparable to film-screen mammography with 30-50% less dose to patients.
- Exclusive GE image processing, including Tissue Equalization™ and Premium View, can automatically optimize contrast from the skin line to the dense glandular parenchyma, for better visibility across the entire breast.
- Fine View processing provides sharper images for improved conspicuity.

# Review more. Do more.

High diagnostic confidence plus optimal productivity – the Seno Advantage™ Review Workstation delivers the best of both. It builds on the ultra-fast power and functionality of GE's industry-leading Advantage Workstation™ platform for faster, streamlined workflow.

- The Seno Advantage Review Workstation features two high-resolution monitors dedicated to mammography and a third monitor for multi-modality images and patient data management.
- The entire breast image is instantly displayed at full resolution on the two 5MP monitors, with a 1:1 match between the pixels acquired from the detector and those displayed on the monitors.
- Review pace is streamlined by a dedicated keypad that places commonly used functions and additional tools – such as invert, zoom, dark mode and optional Computer-Aided Detection (CAD) – at your fingertips.
- Access to optional multi-modality advanced applications and the ability to display and print multi-modality DICOM images allows for greater productivity.
- Intuitive default and customizable hanging protocols for each user.
- Premium View optimizes contrast throughout the entire breast, minimizing or eliminating the need to window and level.
- Communication to referring physicians or surgeons is made easy. All patient images can be printed or saved in DICOM on CD, with a DICOM image viewer to permit viewing images on any PC. Non-DICOM image export allows for image use in PowerPoint™ or other presentations.

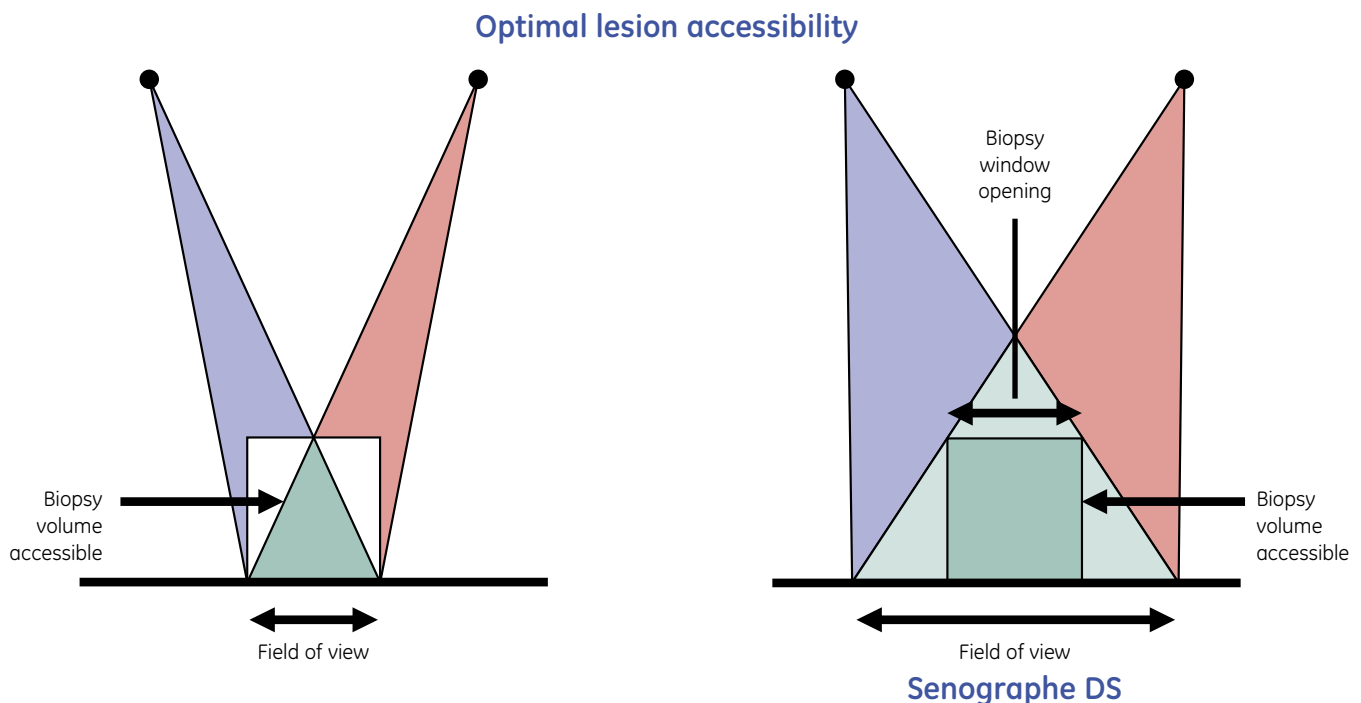
Deliver more information with multi-modality images at a single point of review.



# Streamlining versatility. Fast. Flexible.

Quickly transition to the new stereotaxy option on the Senographe DS for a unique solution that can handle all procedures, from screening to interventional applications... all in one room.

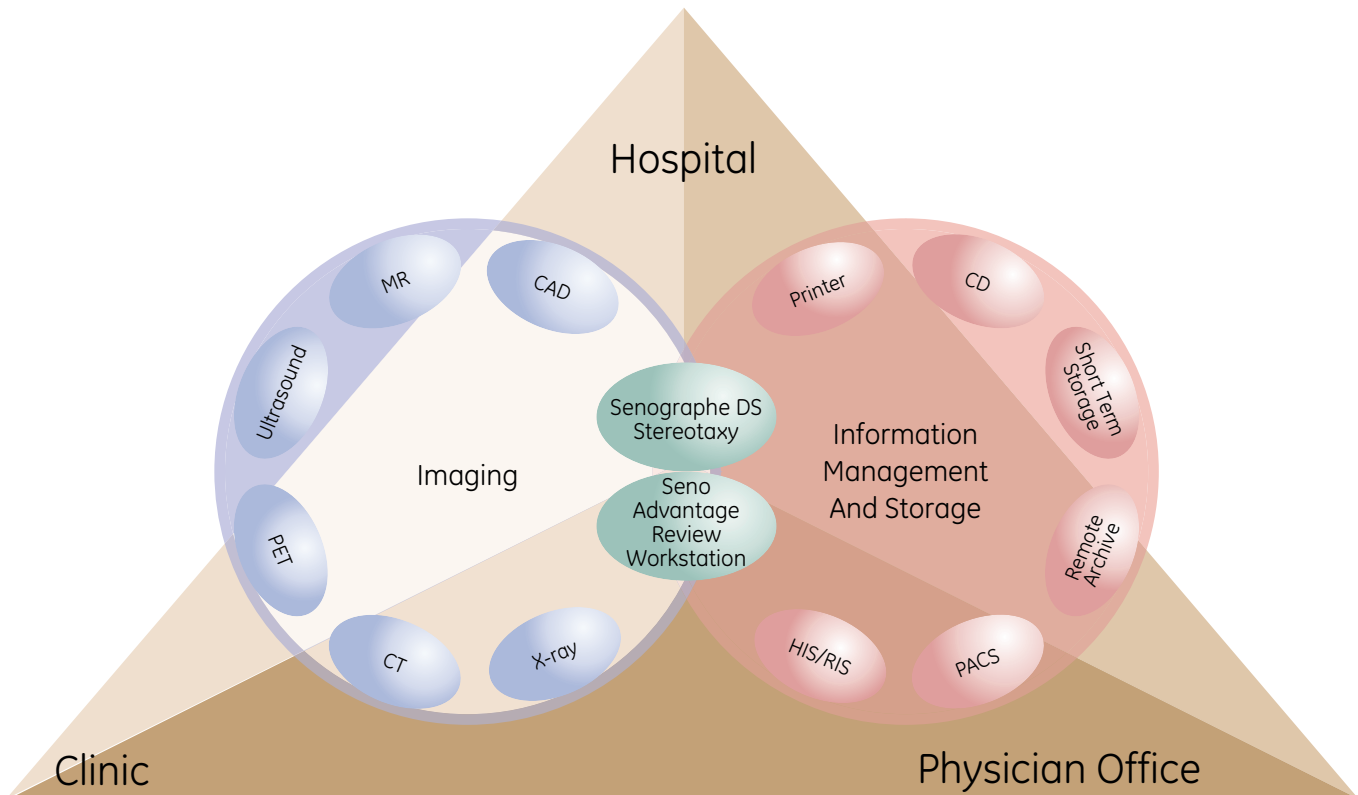
- Quick and easy set-up.
- Consistent superb image quality with GE's exclusive Revolution flat panel detector.
- Convenient in-room control and image review with the acquisition workstation display and trackball mounted on a rotating arm.
- Easy access to the breast and compatibility with vacuum-assisted devices thanks to the distance between the image receptor and the tube head.
- Versatile access to lesions with lateral and vertical approaches and a wide range of positioning angles (-90° to +90°).
- Superior biopsy lesion accessibility and accuracy with the 14x7 cm maximum stereotaxy field of view.
- Exceptional patient comfort because of the slim, profiled tube head and the ability to accommodate seated or recumbent patients.



With the stereotaxy option, the Senographe DS is a cost-effective alternative to a dedicated interventional room - ideal for addressing all stereotactic needs for the best clinical outcome.



# Digital workflow integration. Simply. Seamlessly.



Senographe DS leverages our leadership experience in digital mammography and DICOM connectivity to maximize productivity. Seamlessly integrate with HIS/RIS, PACS, printers and CAD to provide automated, accurate and secure patient data management.

- HIS/RIS DICOM modality worklist eliminates the need for manual patient data entry.
- Prior exams needed for comparisons can be obtained through RIS/Broker/PACS pre-fetching or by DICOM Query-Retrieve at the modality.
- Patient exam data can be auto-pushed from the Senographe DS to any number of DICOM "MG"-compliant archivers, printers, CAD devices and review workstations. Storage commitment assures data integrity while auto-delete automates tedious database clean up.
- 8.8 MB images permit fast image transfer (especially over a WAN) and the fastest CAD processing times, while minimizing archive requirements and long-term costs of ownership.
- Transferred exams arrive for prompt review at the multi-modality Seno Advantage Review Workstation.



## Only GE...

Senographe DS helps you address complex clinical and financial challenges of today's healthcare environment by providing:

- Versatility for mammography screening, diagnostic and interventional procedures using the same state-of-the-art technology.
- High patient throughput.
- Seamless integration with PACS, HIS/RIS and other manufacturers' equipment.

The totality of GE brings you:

- A unique Women's Healthcare Portfolio from an experienced, stable partner...an inventor, leader and innovator committed to the advancement of mammography for over 30 years.
- Advanced service solutions to maximize uptime and utilization.
- Continual Six Sigma-driven technology and processes design, delivering proven, leading-edge technology to ensure a platform for advanced applications and control of the supply chain for equipment and parts.
- Service leadership for optimal uptime.
- iLinq™ provides one-touch access to a GE engineer for a remote diagnostic response.
- Training on-site or at the GE Healthcare Institute to improve staff effectiveness.
- Financing, performance and marketing solutions to optimize the return on your investment.
- A comprehensive portfolio of imaging, monitoring and information management products.

©2005 General Electric Company – All rights reserved.

General Electric Company reserves the right to make changes in specifications and features shown herein, or discontinue the product described at any time without notice or obligation.

GE, GE Monogram, Senographe®, Revolution™, Tissue Equalization™, Advantage Workstation™, Seno Advantage™ and iLinq™ are trademarks of General Electric Company.

Mammotome® is a registered trademark of Ethicon Endo-Surgery, Inc., a Johnson & Johnson company.  
DBI™ is a trademark of Medical Positioning, Inc.

GE Medical Systems, a General Electric company, going to market as GE Healthcare.

For more than 100 years, healthcare providers worldwide have relied on GE Healthcare for medical technology, services, and productivity solutions. So no matter what challenges your healthcare system faces, you can always count on GE to help you deliver the highest quality healthcare. For details, please contact your GE representative today.

GE Healthcare  
3000 North Grandview  
Waukesha, WI 53188  
U.S.A.

[www.gehealthcare.com](http://www.gehealthcare.com)



imagination at work